



Fulfilled

a study of the Gospel of Matthew

Recap of Matthew 1-15

Matthew 1-2 showed the inauguration of Jesus' Kingdom through his birth

- Genealogy fulfills the promise that Jesus is the King of kings



Recap of Matthew 1-15

Matthew 3-4 showed the declaration of Jesus as God's Son through His baptism and temptation, as well as the selection of first apostles



Recap of Matthew 1-15

Matthew 5-15 showed the proclamation and reception of Jesus as King

- The kingdom of heaven is partly present and partly future, spiritual not political
- Kingdom citizens live a new way- not just about the law but the heart



Looking ahead

Matthew 16-25 will show the opposition and rejection of Jesus as King

Matthew 26-28 will show the passion and triumph of Jesus as King

- The decisive battle has been fought and finished





BRITAIN'S KINGS AND QUEENS

63 REIGNS IN 1100 YEARS

SOVEREIGNS FROM 827 TO 1066

EGBERT 827-859	EDGAR 959-975
ETHELWULF 859-866(A)	EDWARD THE MARTYR 975-978
ETHELBALD 866-866	ETHELRED THE UNREADY 978-1013(B)
ETHELBERT 866-866	SWEYN FORKBEARD 1013-1014
ETHELRED I 866-871	EDMUND IRONSIDE 1016-1016
ALFRED THE GREAT 871-901	CANUTE THE DANER 1016-1035
EDWARD THE ELDER 901-924	HAROLD HARDEEOT 1037-1040(C)
ATHELSTAN 924-940	HARDICANUTE 1040-1042
EDMUND I 940-946	EDWARD THE CON- 1042-1066
EDRED 946-955	RESSOR 1042-1066
EDWY 955-959	HAROLD II 1066-1066

(A) Abdicated. (B) Deposed, restored 1016-1016. (C) Harficanute nominated to succeed Canute in 1035 but he was abroad. Harold Harfoot became undisputed king 1037-1040.

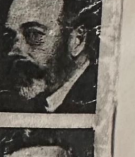
SOVEREIGNS FROM 1066 TO 1952

WILLIAM I 1066-1087	CHARLES I 1625-1649
WILLIAM II 1087-1100	* *
HENRY I 1100-1135	* *
STEPHEN 1135-1154	Commonwealth Declared 1649
HENRY II 1154-1189	LORD PROTECTOR 1653-1658
RICHARD I 1189-1199	RICHARD CROMWELL 1658-1659
JOHN 1199-1216	LORD PROTECTOR 1658-1659
HENRY III 1216-1272	* *
EDWARD I 1272-1307	CHARLES II 1649-1685(V)
EDWARD II 1307-1327(D)	JAMES II 1685-1689(D, A)
EDWARD III 1327-1377	WILLIAM III 1689-1702 (H)
RICHARD II 1377-1399(D)	and
HENRY IV 1399-1413	MARY II 1689-1694
HENRY V 1413-1422	ANNE 1702-1714
HENRY VI 1422-1461(H)	GEORGE I 1714-1727
EDWARD IV 1461-1483	GEORGE II 1727-1760
EDWARD V 1483(O)	GEORGE III 1760-1800
RICHARD III 1483-1485	GEORGE IV 1820-1830
HENRY VII 1485-1509	WILLIAM IV 1830-1837
HENRY VIII 1509-1547	VICTORIA 1837-1901
EDWARD VI 1547-1553	EDWARD VII 1901-1910
JANE GREY 1553 (X, D)	GEORGE V 1910-1936
MARY I 1553-1558	EDWARD VIII 1936 (Z)
ELIZABETH I 1558-1603	GEORGE VI 1936-1952
JAMES I 1603-1625	ELIZABETH II Succeeded 1952

(A) Declared by Act of Parliament 2 February 1689, to have Abdicated on 11 December 1688.
 (D) Deposed. (E) Declared Joint Sovereigns, 3 February 1689. (H) Deposed 1461 and Edward IV succeeded. Restored to the Throne October 1470—May 1471, when he was again deposed and Edward IV was restored. (O) Reigned from April to June 1483. (X) Reigned for 9 days. (V) Actual reign began when returned to Throne in 1660. (Z) Abdicated on 11 December 1936, after reigning 325 days and was created Duke of Windsor. He was never crowned.

A COMPANION BOOK, "THE ROYAL LINE OF SUCCESSION",
 BY PATRICK W. MONTAGUE-SMITH, EDITOR, DEBRETTS' PEERAGE,
 IS AVAILABLE IN THIS SERIES.

THIS IS ONE OF THE PITKIN "PRIDE OF BRITAIN" BOOKS







Matthew 16

Right confession of who Jesus is results in a saving faith

- Peter (Petros)- smaller rock or stone
- Rock (Petras)- large rock, mountain

Rock is a symbol of God



“As you come to him, the living Stone – rejected by humans but chosen by God and precious to him— you also, like living stones, are being built into a spiritual house to be a holy priesthood, offering spiritual sacrifices acceptable to God through Jesus Christ. For in Scripture it says:

See, I lay a stone in Zion, a chosen and precious **cornerstone**, and the one who trusts in him will never be put to shame.

Now to you who believe, this stone is precious. But to those who do not believe, “The stone the builders rejected has become the **cornerstone**.” – 1 Peter 2:4-7



“For I do not want you to be ignorant of the fact, brothers and sisters, that our ancestors were all under the cloud and that they all passed through the sea. They were all baptized into Moses in the cloud and in the sea. They all ate the same spiritual food and drank the same spiritual drink; for they drank from the spiritual rock that accompanied them, and that rock was Christ.” – 1 Corinthians 10:1-4



Matthew 16

- The Church belongs to Jesus and is built upon the confession of faith in Him as Messiah, embodying God's Kingdom in word and deed



Matthew 16

Right submission to Jesus results in a serving faith

- The gospel is the key to the kingdom of heaven that opens the door of faith
 - We have authority from God to share His good news to all people









Matthew 16

Right submission to Jesus results in a serving faith

- We become a stumbling block to the gospel when we don't submit to God





בֵּית דוֹלוֹרוֹסָה

طريق الآلام

VIA DOLOROSA

Matthew 16

Right submission to Jesus results in a serving faith

- Following Jesus means self-denial not self-help or self-preservation or self-exaltation
- The demands of discipleship are high but the rewards are far greater



Matthew 17

Right perspective of Jesus results in
worship and preparation for our
Kingdom assignments



Matthew 17

- As we behold Jesus in prayer and Scripture, we become stronger in our faith



Matthew 17

- We can because Jesus cares and is King over all things
- Trust Jesus to provide for all your needs in both new and old ways



Matthew 16

Right submission to Jesus results in a serving faith

- Following Jesus means self-denial not self-help or self-preservation or self-exaltation
- The demands of discipleship are high but the rewards are far greater



Matthew 17

Right perspective of Jesus results in
worship and preparation for our
Kingdom assignments



Matthew 17

- As we behold Jesus in prayer and Scripture, we become stronger in our faith

