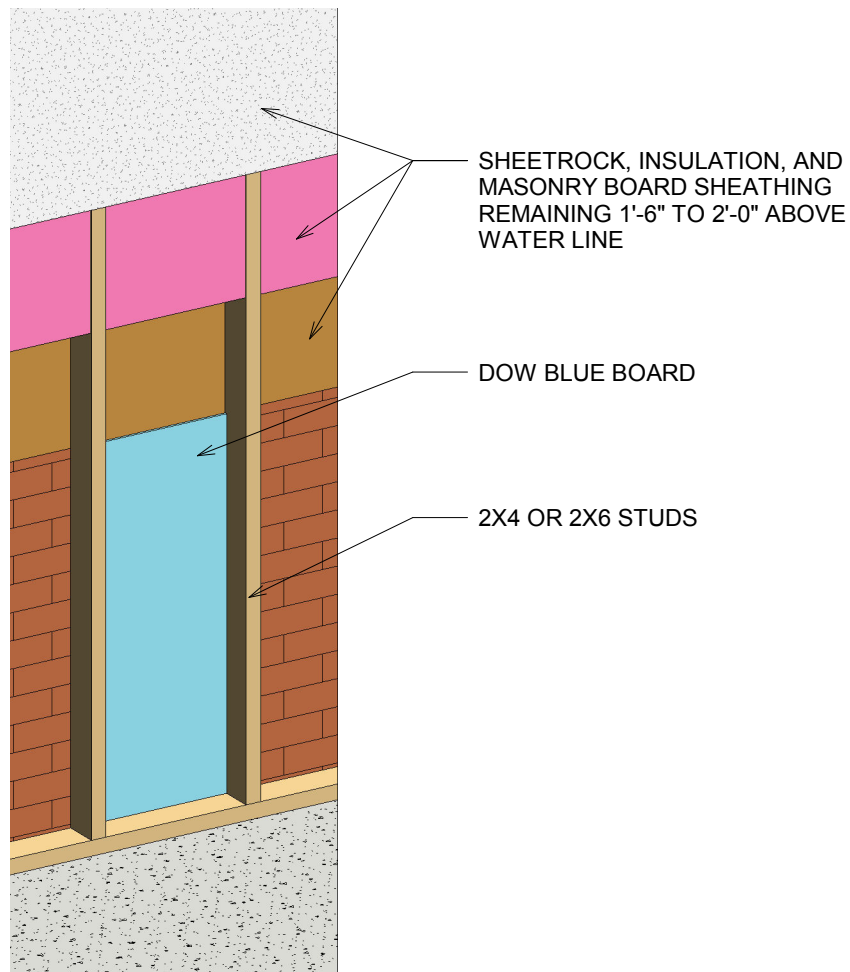


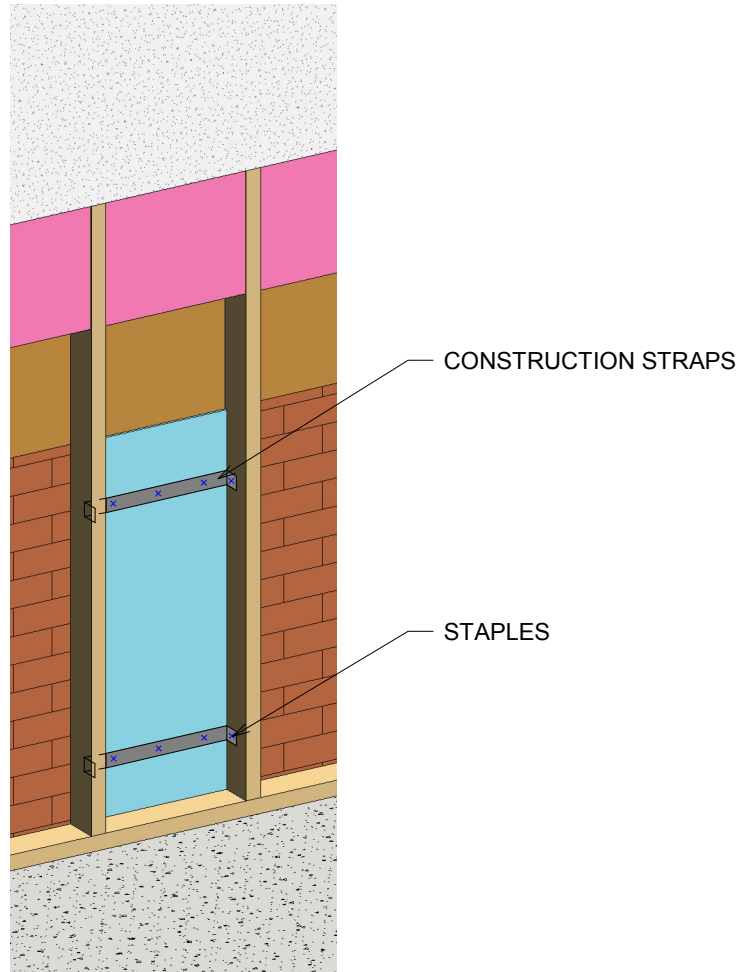
**PREP NOTES:**

1. Remove wet or damaged sheetrock, insulation, and masonry board sheathing at least 1'-6" to 2'-0" above highest water mark.
2. Do not remove the pieces of masonry board sheathing directly behind the studs.
3. Make cuts as clean and straight as possible.
4. Clean, disinfect, and treat affected area with fungicide.



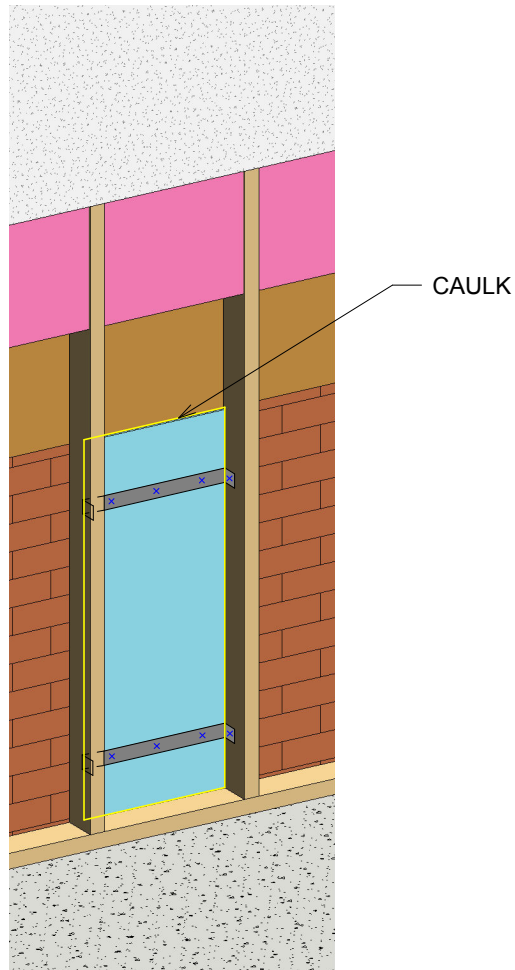
**STEP 1 NOTES:**

1. Line up DOW Blue Board with the outside edge of the exterior sheathing.



**STEP 2 NOTES:**

1. Staple construction straps to inside of studs to hold in place.



**STEP 3 NOTES:**

1. Caulk along the seams of the DOW Blue Board.